



# 6" RETRACTABLE COVER WITH INTEGRATED T-SLOT BED RACK SYSTEM INSTALLATION



## SUPPLIED PARTS

X4 UPRIGHT BRACKETS

X2 CROSSBARS

1X HARDWARE BAG

1X T40 "L" WRENCH



6" BRACKET SHOWN (X4)



CROSSBARS (X2)



"L" WRENCH (1X)

## TOOLS REQUIRED

13MM WRENCH and SOCKET

TAPE MEASURE

T40 IMPACT BIT (OPTIONAL, SOLD SEPERATELY)

## INSTALLATION

Torque and Tool Chart		
Bolt	Tool	Torque
M8 T40 Security Bolts	T40 Security Bit	15-20 ft*lbs
M8 Hex Hd Bolt or Nut	13mm Wrench and Socket	20-25 ft*lbs

## BRACKETS

When installing brackets, measure from a fixed point on the truck on both the passenger and driver side of the bed to be certain the brackets are in identical locations and perpendicular to the length of the bed.

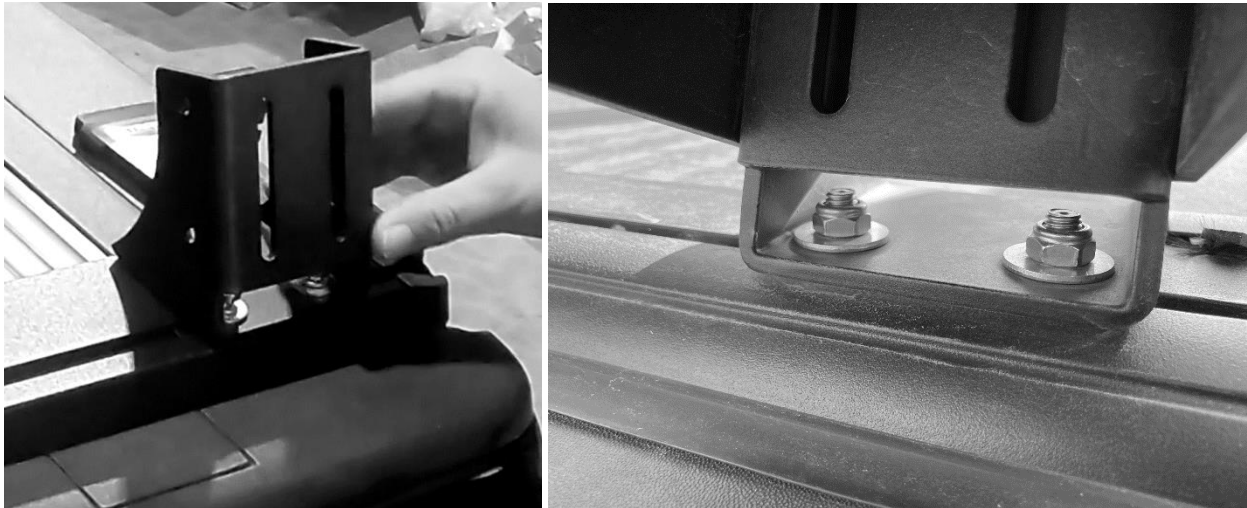


Insert the t-nut style or Carriage bolt style hardware into the track rail (kit dependent). You can also attach the hardware to the bracket and slide the brackets into the t-slots on the cover.

*Note: For the black t-nuts, make sure the nipple end of the threads is facing upwards*



The hardware stack up (kit dependent) is a 13mm Hex Hd bolt, a lock washer, and a large flat washer. For the carriage bolt style installation, it will be a Nylon lock nut, a large flat washer and the carriage bolt will be upside down in the track rail.



**Tighten M8 Screws to 20 ft\*lbs using a 13mm wrench. Periodically check tightness.**

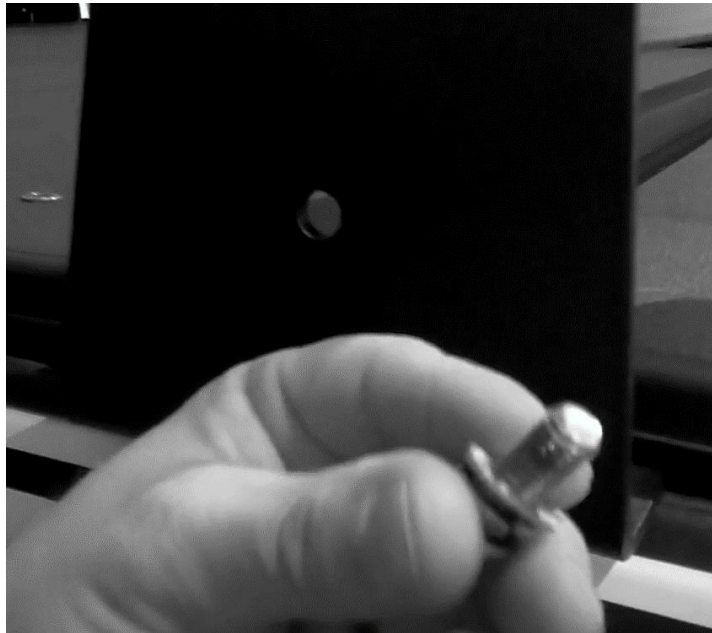
*Note: this is easier with a ratcheting wrench type*

## Crossbars

Once brackets are installed – Place your crossbars in the cradles.



Use the M8 security screws next, place the lock washer over the bolt, then the flat washer.



Hand start threads into the end of the crossbars.



Tighten bolts using T40 security bit.



**Tighten M8 Security Screws to 15-20 ft\*lbs using a T40 Security bit (Other bits are available on our website!). Periodically check tightness.**

## USE GUIDELINES

We encourage safe usage of all our products we have tested and designed for real life use. This being said, there are always outside factors we can't always account for and comprehend.

- Only use racks that were designed for your specific vehicle.
- Be certain all knobs, bolts, screws and nuts are firmly tightened and torqued before every driving event. These should be periodically inspected for tightness and any other stress or signs of fatigue.
- The maximum loads should never be exceeded. Weight ratings are 400lbs dynamic and 800lbs static max distributed load for the 5 and 8 inch high racks. The weight rating our retractable covers with integrated t-slot racks are way higher than the actual covers can handle. Please refer to your cover manufacturers' suggested loads. These loads are always calculated by the entirety of accessories mounted. For example, any mounting brackets would be added to the load being carried. The maximum weight rating will also be determined by the truck manufacturers' recommended load rating and should never be exceeded by our ratings.
- High speed off-road driving has not officially been tested with our racks.
- It is the user's responsibility to ensure all loads are attached firmly and safely. All local and state laws should be followed when loading your vehicle.

## WARRANTY

BillieBars Warrants our branded products free from defects in material and workmanship, for terms specified below, provided there has been normal use and proper maintenance. All remedies under this warranty are limited to the repair or replacement of any item found by the factory to be defective within the time period specified. Damage to products caused by accidents, Fire, vandalism, negligence, mis-installation, misuse, Acts of God, or by defective parts not manufactured by us, is not covered under this warranty. THE WARRANTY TIME PERIOD IS AS FOLLOWS: (2) TWO YEARS FROM DATE OF PURCHASE.

FOR WARRANTY ISSUES PLEASE REACHOUT TO US AT [SUPPORT@BILLIEBARS.COM](mailto:SUPPORT@BILLIEBARS.COM)